



NORO

KNITTING MAGAZINE **Heart Blanket**



33 Heart Blanket

●●○○ EASY



Finished Measurements

- 51 x 56"/129.5 x 142cm.

Materials

- 7 skeins of Noro *Kureyon* in #102 (A)
- 6 skeins in each #344 (B) and #343 (C)
- One pair size 8 (5mm) needles, OR SIZE TO OBTAIN GAUGE.
- Size 8 (5mm) circular needle, 32in/80cm long.

Gauges

- 15 sts and 22 rows = 4in/10cm over St st using size 8 (5mm) needle.
TAKE TIME TO CHECK GAUGE.

Knitting Abbreviations

approx approximately; **beg** begin(ning); **CC** contrasting color; **cm** centimeter(s); **cn** cable needle; **cont** continue(ing); **dec** decrease(ing); **dpn** double pointed needle(s); **fall** follow(s) (ing); **g** gram(s); **inc** increase(ing); **k** knit; **kfb** knit into front and back of stitch; **LH** left-hand; **m** meter(s); **mm** millimeter(s); **MC** main color; **M1** make one (see glossary); **M1 p-st** make one purl stitch (see glossary); **oz** ounce(s); **p** purl; **pat(s)** pattern(s); **pm** place marker; **psso** pass slip stitch(es) over; **rem** remain(s) (ing); **rep** repeat; **rev** reverse stockinette stitch; **RH** right-hand; **RS** right side; **rnd(s)** round(s); **SKP** slip 1, knit 1, pass slip stitch over; **SK2P** slip 1, knit 2 stitches together, pass slip stitch over k2tog; **S2KP** slip 2 stitches together knitwise, knit 1, pass slip stitches over knit 1; **sl st** slip stitch; **ssk/ssp** slip, slip, knit/purl (see glossary); **st(s)** stitch(es); **St st** stockinette stitch; **tbl** through back loop; **tog** together; **WS** wrong side(s); **wyib** with yarn in back; **wyif** with yarn in front; **yd** yard(s); **yo** yarn over (hook or needle); * repeat directions following * as many times as indicated; [] repeat directions inside brackets as many times as indicated.

Crochet Abbreviations

BP back post; **BPdc** back post double crochet; **BPsc** back post single crochet; **BPtr** back post treble crochet; **ch** chain(s); **ch-** refers to chain or space previously made (i.e., ch-1 space); **ch-sp** chain space previously made; **dc** double crochet (UK: tr=treble); **dc2tog** double crochet 2 stitches together; **dtr** double treble (UK: trtr=triple treble); **FP** front post; **FPdc** front post double crochet; **FPsc** front post single crochet; **FPtr** front post treble crochet; **grp(s)** group(s); **hdc** half double crochet (UK: htr=half treble); **lp(s)** loop(s); **sc** single crochet (UK: dc=double crochet); **sc2tog** single crochet 2 stitches together; **sk** skip (ped); **sl st** slip stitch (UK: sc=single crochet); **sp(s)** space(s); **t-ch** turning chain; **tr** treble (UK: dtr=double treble); **trtr** triple treble (UK: qtr=quadruple treble).

Glossary

bind off To finish off an edge and keep stitches from unraveling by lifting the first stitch over the second, the second over the third, etc. (UK: cast off).

bind off in ribbing Maintain the rib pattern as you bind off (knit the knit stitches; purl the purl stitches) (UK: cast off in ribbing).

cast on Form a foundation row by making specified number of loops on the knitting needle.

decrease Reduce the number of stitches in a row (i.e., knit 2 together; purl 2 together).

increase Add to the number of stitches in a row (i.e., knit in front and back of stitch).

knitwise Insert the needle into the stitch as if you were going to knit it.

make one Insert tip of LH needle from front to back under the strand between the last stitch worked and the next stitch on the needle. Knit into the back loop to increase one stitch.

make one purl stitch With the needle tip, lift the strand between the last stitch worked and the next stitch on left-hand needle and purl it. One purl stitch has been added.

no stitch On some charts, "no stitch" is indicated with shaded spaces where stitches have been decreased or not yet made. In such cases, work the stitches of the chart, skipping over the "no stitch" spaces.

place markers Loop a piece of contrasting yarn or a purchased stitch marker onto the needle.

pick up and knit/purl Knit (or purl) into the loops along an edge.

purlwise Insert the needle into the stitch as if you were going to purl it.

selvage stitch Edge stitch that helps make seaming easier.

skip Skip specified number of stitches of the previous row and work into next stitch (UK: miss).

slip, slip, knit/purl Slip next two sts knitwise (purlwise), one at a time, to right-hand needle. Insert tip of left-hand needle into fronts of these sts from left to right and knit/purl them together to decrease one stitch.

slip stitch In knitting, pass a stitch from the left-hand to the right-hand needle as if to purl without working it. In crochet, insert hook through loop or edge, yarn over and pull through loop on hook (UK: ss or sc).

work even Continue in specified pattern without increasing or decreasing (UK: work straight).

yarn over In knitting, make a new stitch by placing the yarn over the right-hand needle (UK: yfwd, yon, yrn). In crochet, wind yarn around hook. (UK: yoh or yrh).

SQUARE

(make 21 with B as background color and 21 with C as background color)

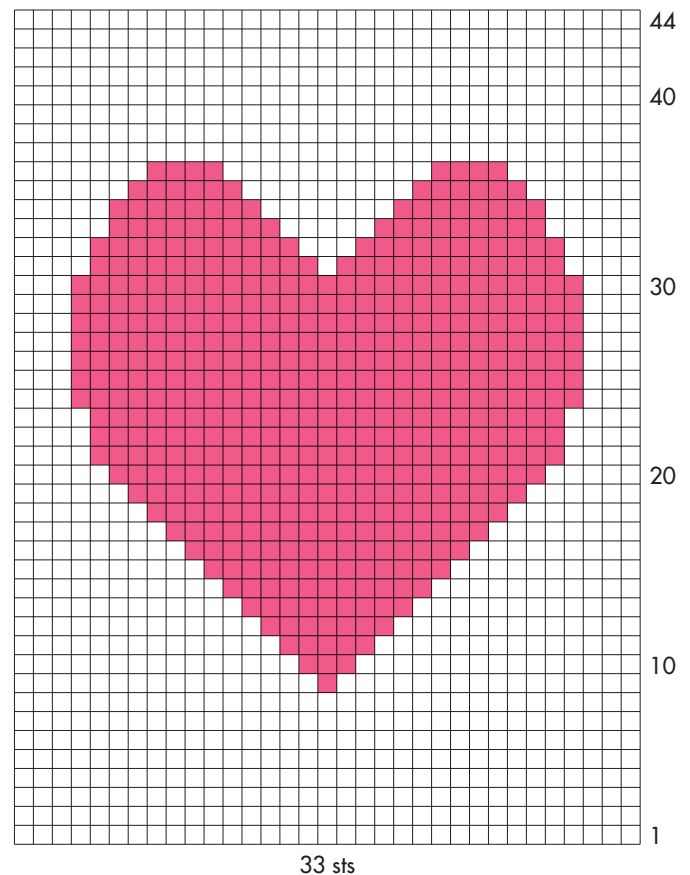
With B or C, cast on 33 sts. Working in St st (k on RS, p on WS), work chart through row 44. Bind off.

Finishing

Block individual squares. Arranging squares as desired, sew 6 squares together to form a row. Sew 7 rows together.

With RS facing, circular needle and A, pick up and k234 sts along side edge. Knit 1 row. Bind off. Rep for opposite side edge.

With RS facing, circular needle and A, pick up and k192 sts along upper edge. Knit 1 row. Bind off. Rep for lower edge. ■



Color Key

■ A □ B or C

